

Solder Paste Printer

KSP

JUKI



3E EVOLUTION

The Ultimate Screen Printer That Exceeds All Your Expectation

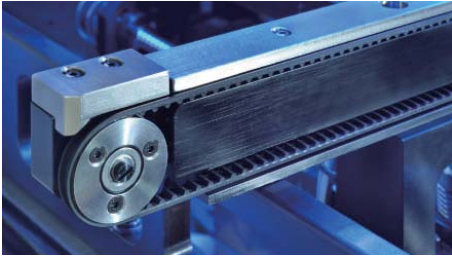


The power of continuous improvement



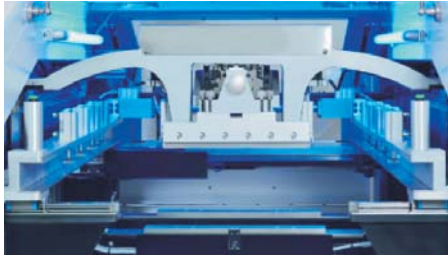
Best In Class Fully Automatic Printer For Performance vs Price
Developed With Powerful Built-in Features And Flexibility

Single Stage Conveyor with U-Shape Belt



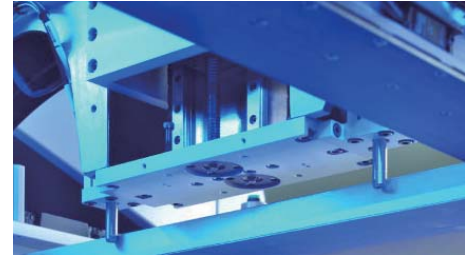
Automatic conveyor width adjustment, software control flow direction(L>R,R>L.L>L,R>R) and the highly durable Antistatic U-shape belt are all standard features, Conveyor belt is driven by stepper motor with a precision control of PCB soft stop position.

Arch Shape Squeegee Beam



The Arch Shape Squeegee Beam is made by solidly casted high intensity steel material, It provides the rigidity and the durability to the entire squeegee assembly for stable and balance squeegee movement.

SPM(Stencil Position Memory) System



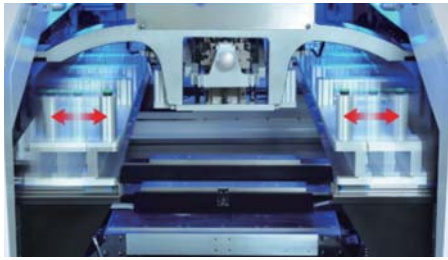
To set mechanical stop for the Y position when loading the stencil, Stencil position is saved with each file. This feature drastically reduces model changing time.

Automatic Stencil Wiper System



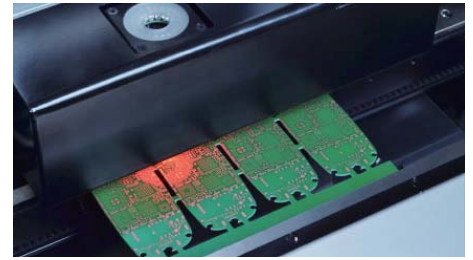
A two ways automatic wet/dry/vacuum stencil wiper allows user to select any combination of cleaning mode to best suit their application

Adjustable Stencil X Frame Mechanism



By at ouch of pneumatically operated buttons, X Frame size can be adjusted to suit stencil size of 480 x 500 mm to 737 x737 mm without using any stencil adapt .ro Stencil can be easily slotted into the frame mechanism and clamped firmly by 8 plungers (4 on each side).

Vision and Optics System



The simultaneously Look Up/Look Down optical camera system adopted uniform ring light and high brightness coaxial light, equipped with adjustable brightness control can handle all kinds of fiducial marks with high resolution and precision.

Specifications

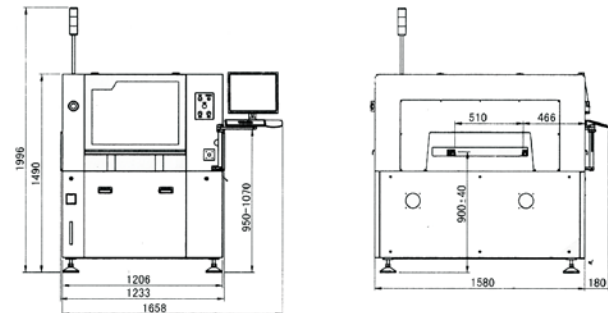
Solder Paste Printer	
Model name	KSP
PWB size	50mm x 50mm -510mm x 510mm
Cycle time	8.5 sec + Printing time
Positioning accuracy	±12.5µm (6σ)
Frame size	480mm x 500 mm ~ 737 mm x 737 mm
Power supply	AC220V ^{※1} , 0.49MPa, single-phase
Dimensions	W1,206mmxD1,684mmxH1,410mm
Weight	1,200kg

※1 Electric power supply: AC 220V - single phase specification only.

※ Above figures are subject to vary on the conditions. Please contact our sales reps for details.

External Dimensions

Unit: mm



JUKI®

MANUFACTURER: JUKI CORPORATION
 INQUIRY: JUKI AUTOMATION SYSTEMS CORPORATION
 2-11-1, Tsurumaki, Tama-shi, Tokyo 206-8551, JAPAN
 TEL.81-42-357-2293 FAX.81-42-357-2285

<http://www.juki.co.jp>

■ JUKI Specifications and appearance may be changed without notice.
 ■ This catalogue prints with environment-friendly soyink on recycle paper.

Jun-2014/Rev.01

